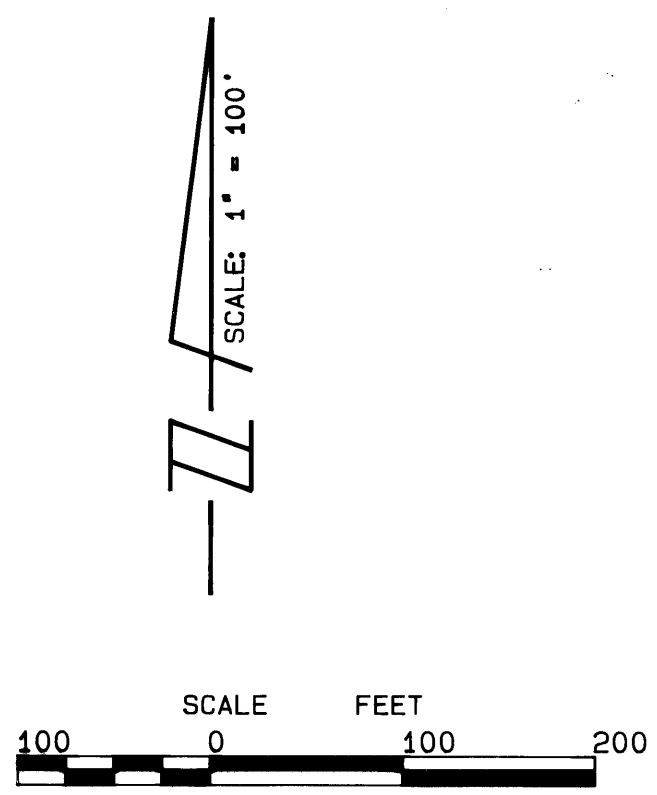


A PLAT OF SANDHILL COVE PLAT NO. 52 MARTIN DOWNS, A P.U.D. BEING A PORTION OF GOVERNMENT LOT 2 LYING IN SECTION 7, TOWNSHIP 38 SOUTH, RANGE 41 EAST MARTIN COUNTY, FLORIDA



AUGUST, 1989

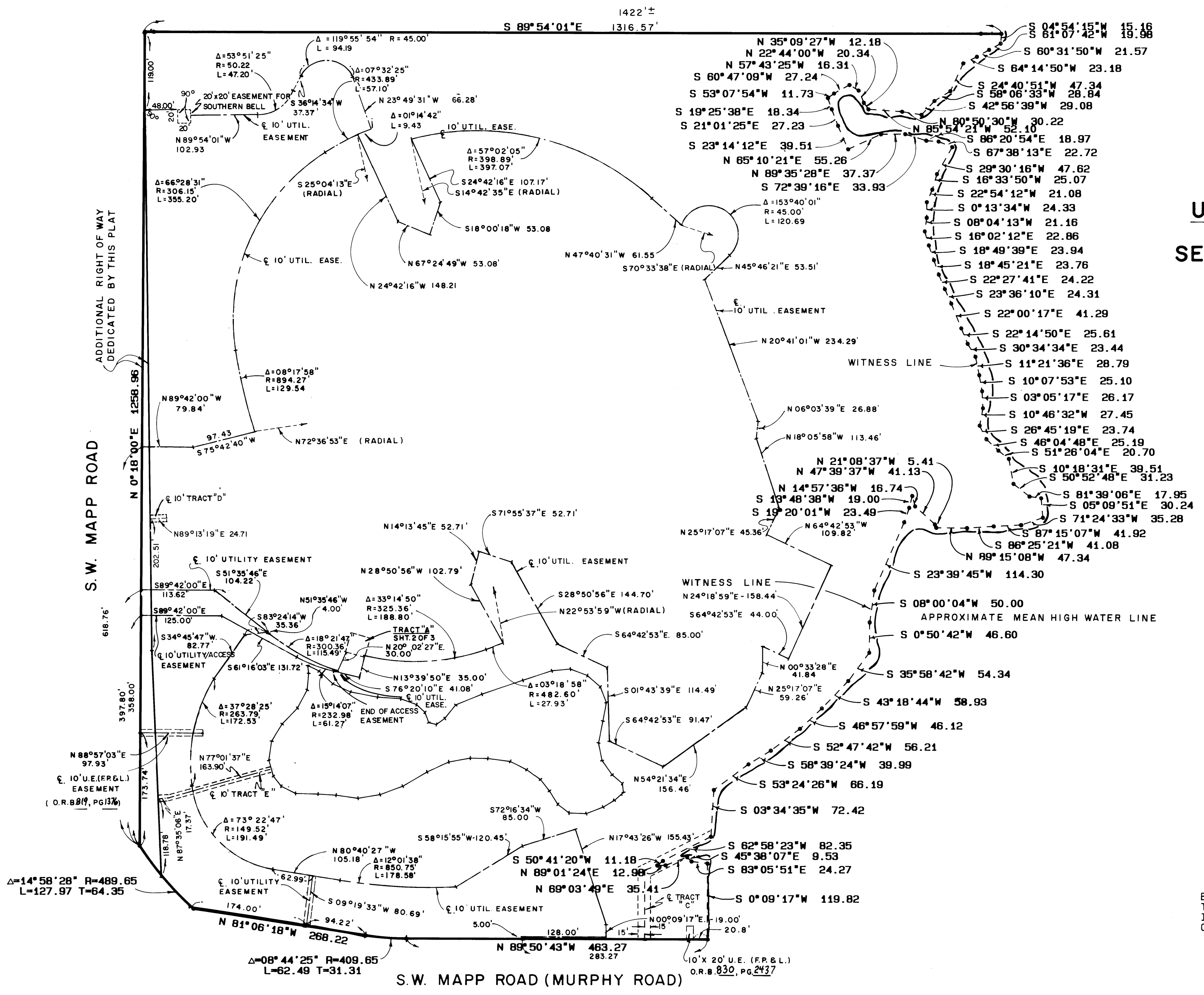
I, MARSHA STILLER, CLERK OF THE CIRCUIT COURT OF MARTIN COUNTY, FLORIDA, HEREBY CERTIFY THAT THIS PLAT WAS FILED FOR RECORD IN PLAT BOOK 12, PAGE 21, MARTIN COUNTY, FLORIDA, PUBLIC RECORDS, THIS 19th DAY OF AUGUST, 1989.

MARSHA STILLER,
CLERK CIRCUIT COURT
MARTIN COUNTY, FLORIDA.

BY: _____
DEPUTY CLERK

FILE NO. _____

(CIRCUIT COURT SEAL)



**DETAIL SHEET OF
UTILITY EASEMENTS**

**SEE SHEET 2 OF 3 FOR BOUNDARY
INFORMATION**

BEARING BASE:
THE NORTH RIGHT-OF-WAY LINE OF MURPHY ROAD
IS ASSUMED TO BEAR N 89°50'43"W AND ALL
OTHER BEARINGS ARE RELATIVE THERETO.

THIS PLAT PREPARED BY:
THOMAS C. VOKOUN, P.L.S.
FOR
LINDAHL, BROWNING, FERRARI & HELLSTROM, INC.

<p style="font-size: 8px; margin: 0;">LINDAHL BROWNING FERRARI & HELLSTROM, INC. CONSULTING ENGINEERS, PLANNERS & SURVEYORS</p> <p style="font-size: 8px; margin: 0;">P.O. BOX 727 LITTLE FLORIDA 32064</p> <p style="font-size: 8px; margin: 0;">18 CENTRAL PARKWAY SUITE 408 STUART, FLORIDA 34994</p> <p style="font-size: 8px; margin: 0;">1905 SOUTH 22ND STREET SUITE 202 FORT PIERCE, FLORIDA 34947</p>	3	3
------------------------------------------------------------------------------------------------------------------------------------------------------------------------------------------------------------------------------------------------------------------------------------------------------------------------------------------------------------------------------------------------------------------------------------------------	---	---